



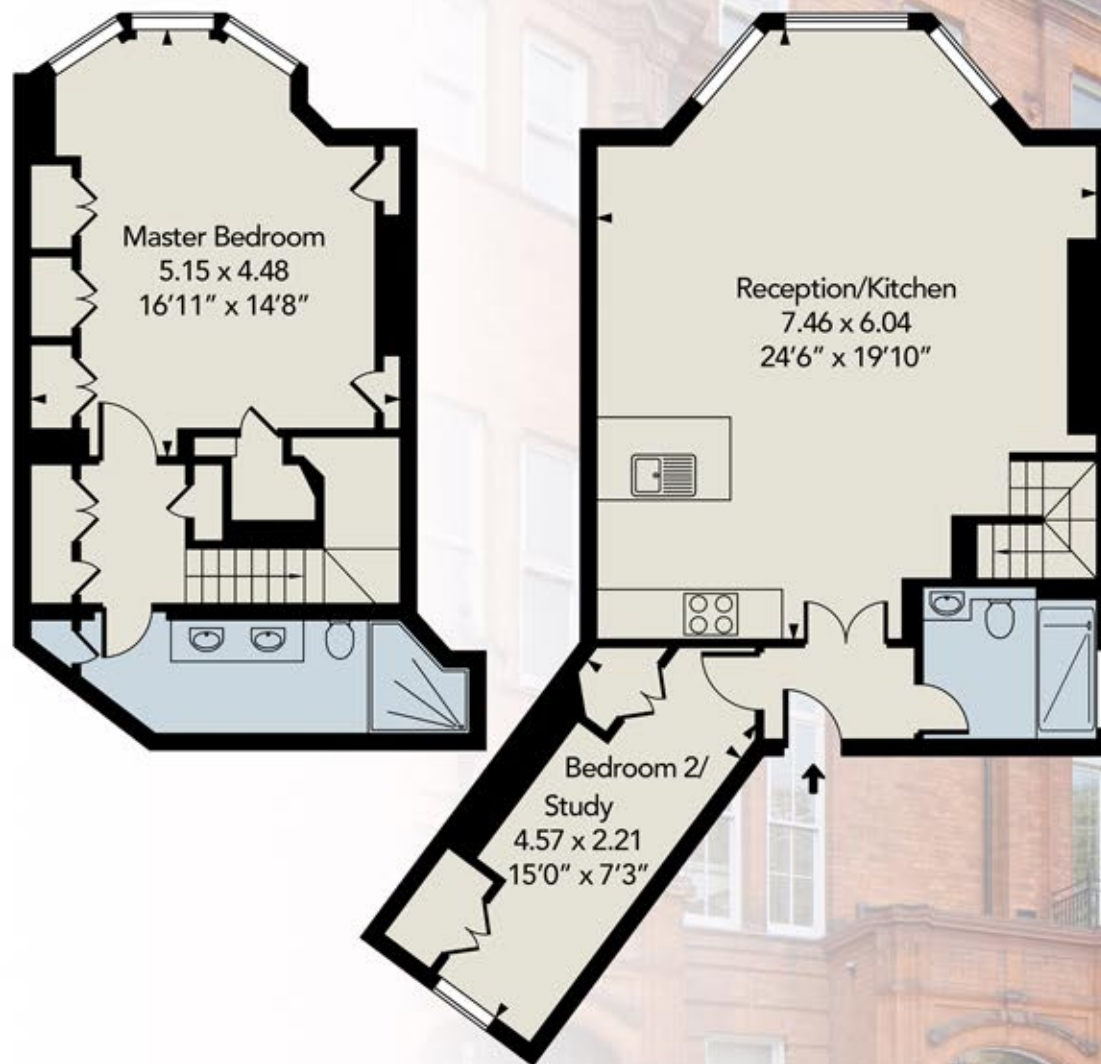
HANS PLACE
LONDON SW1



An opulent 2 bedroom duplex apartment that redefines the concept of luxury living. This exemplary property has been refurbished to exacting standards combining state of the art technology with exquisite design. This stunning apartment benefits from a 20' square reception room with high ceilings and is set in a red brick Victorian conversion in this sought after garden square in the heart of Knightsbridge. Hans Place is located to the south of the Brompton Road moments from Harrods, the world class shopping on Sloane Street and the green spaces of Hyde Park.



HANS PLACE LONDON SW1



Lower Ground Floor

Ground Floor

Approx Gross Internal Area 973 Sq Ft - 90.40 Sq M

▪ 973 sq ft/ 90.4 sq m ▪ Reception room ▪ Kitchen ▪ 2 Bedrooms ▪ 2 Bathrooms ▪ Crestron Home Automation System ▪ Light fittings exclusively by Murano ▪ Bathroom fittings by Vola ▪ Under floor heating to bathrooms ▪ Kitchen appliances by Gaggenau and Miele ▪ Alarm system ▪ Access to communal gardens

Leasehold: 97 years

Service Charge: £8,513 per annum including heating and hot water

Price: £POA

Sole Agent

MISREPRESENTATION ACT 1967

Whilst every effort has been made to ensure accuracy, this brochure and the contents herein do not constitute representation or warranty. It should be treated as a guide only. For accurate details, it is advised to inspect in person.

Brochure by *Estate Media*



21-22 Vicarage Gate
London W8 4AA

020 7937 9070
croftinternational.com